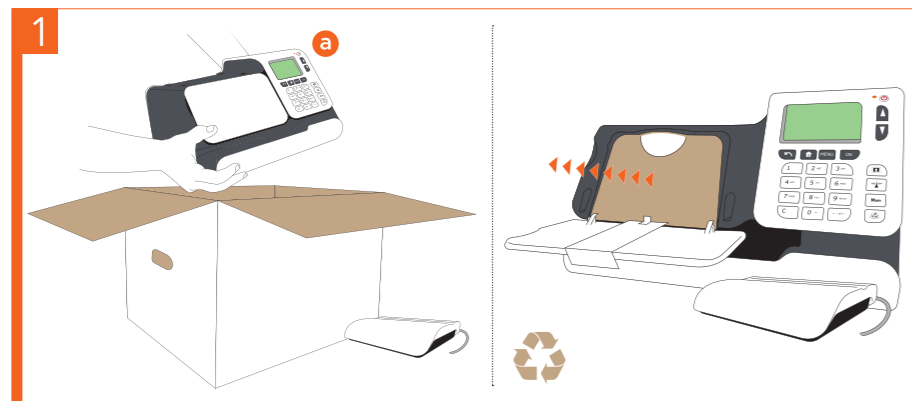
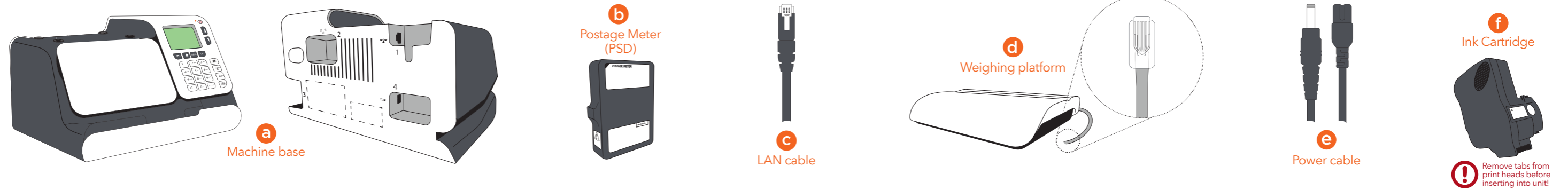


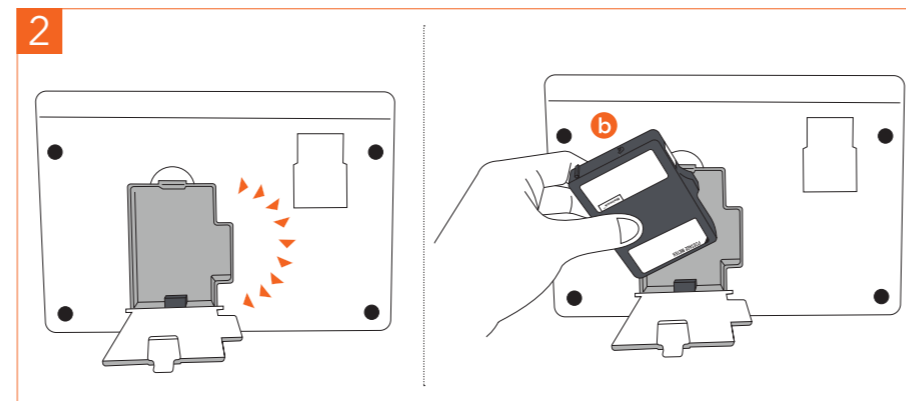
Fs Series 3

Quick Installation Guide

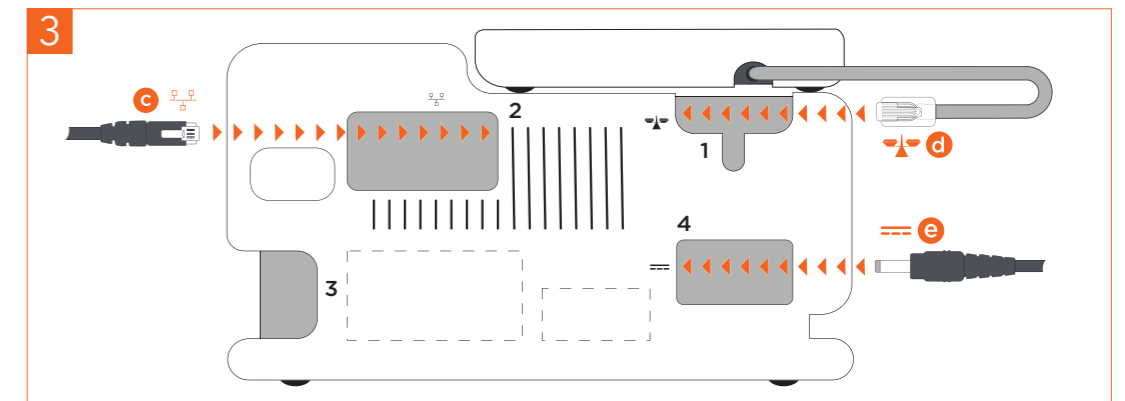
Box contents includes:



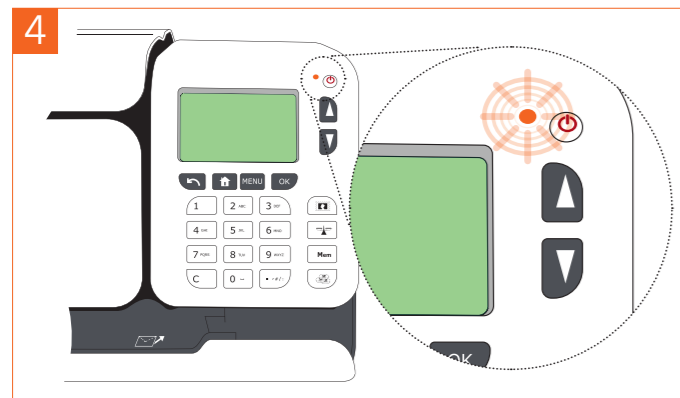
Unpack box, remove packaging.



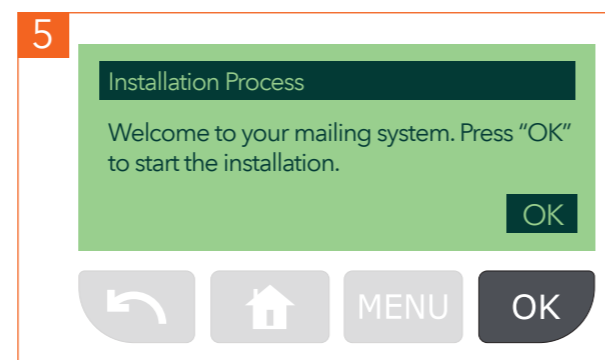
Insert meter (b).



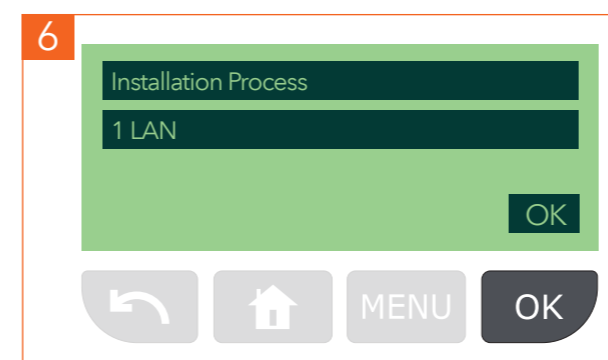
Plug in LAN cable (c), weigh platform cable (d - place weigh platform in position) and power cable (e).



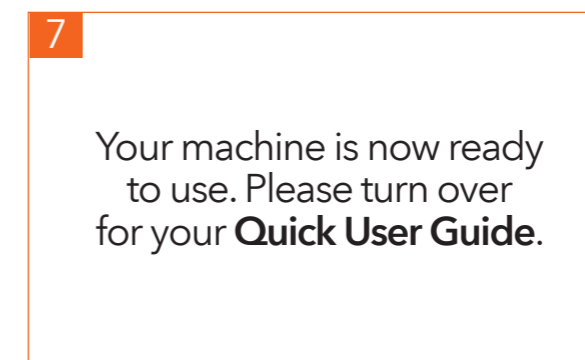
Power the machine on.



Press OK to start the installation.



Follow the step by step instructions.

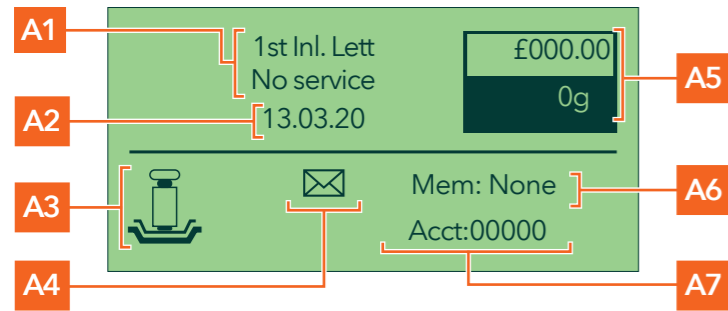


For more help with your installation, please visit:

www.frama.co.uk/Fs3

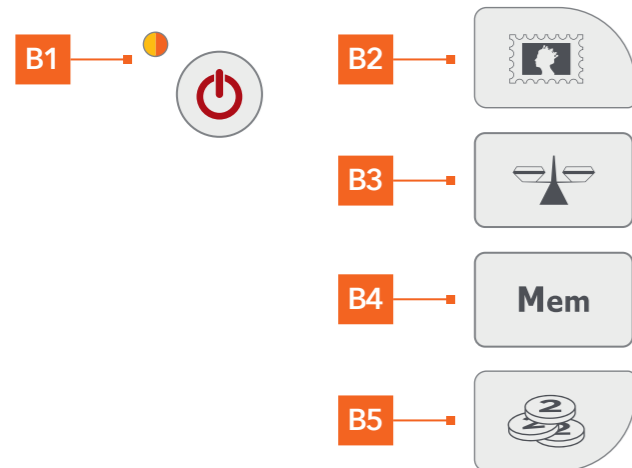
Getting to know your Franking Machine

Screen Information



- A1 Rate and services (to change: B2)
- A2 Date printed
- A3 Weighing type (to change: B3)
- A4 Message notification
- A5 Postage and weight
- A6 Memorized job (can contain rate, stamp settings and account)
- A7 Current account

Shortcut keys



- B1 Sleep/On/Off-mode (amber/green/flashing amber)
- B2 Rate and postal services selection
- B3 Weighing modes
- B4 Memorized jobs (rate, stamp settings and account)
- B5 Credit management

Quick steps to franking your mail

1 To reset the machine...

Press:

- to clear the information on screen.
- to wake the machine up with default settings.
- to return to the home screen.

2a To weigh an item...

Put the mail on the platform:

1. Check that the A3 icon is
2. Otherwise press and select the option: **Standard weighing**

2b or, if you know the weight...

Key the weight in manually:

1. Press and then select the option: **Manual weight entry**
2. Enter the weight and press

3 When the weight is displayed...

Select a rate (and services):

Currently selected rate and services are indicated at the top of the screen.



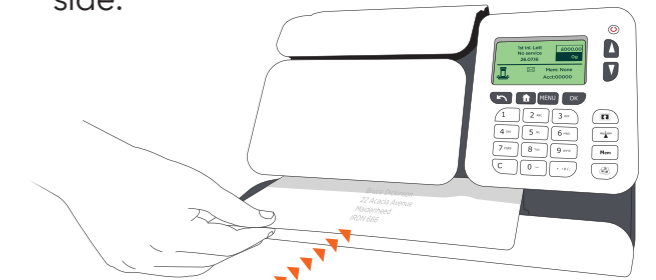
Change/add services:

1. Press The Rate selection screen is displayed.
-
- The screenshot shows: '1st Inl. Lett', 'No service', '£000.0', '0g', '26.07.16', and a list of options: 1 1st Class, 2 2nd Class, 4 Inland, 5 Intl, 8 Wizard.
2. Use the keypad to choose a rate or service option, or use the wizard for access to more rates.
 3. When done, press to confirm your selection and return to the home screen.

4 When all steps are completed...

Print the stamp:

1. Insert the mail into the machine, the stamp will print on the upper right hand side.



2. Push the item to the back and right of the machine. Hold in position until printing has finished, then remove.

Adding credit

Press choose '**Credit**' and follow the instructions on screen.

Note: in order to add credit to the machine there must be funds available in your postage account.

For more specific information on your franking machine, please visit www.frama.co.uk/Fs3

Changing the ink cartridge

1. Open the machine by pulling the left hand side front panel towards you.
2. On the keypad, press and select **Cartridge > Headset Replacement**. The cartridge moves to a replacement position and a waiting message is displayed on the screen.

3. Pull the blue lever to free the empty cartridge. Remove the cartridge.
4. On the new ink cartridge, remove the protective strip from the printing head.



A0127546/A - 29/10/2019

5. Insert the new ink cartridge in the carriage, and then lock it by pushing the blue lever back in place.
6. Close the front panel and press on the control panel.
7. Follow the steps on screen.

